

# CL800 2V 800Ah(10hr)

The rechargeable batteries are lead-lead dioxide systems. The dilute sulfuric acid electrolyte is absorbed by separators and plates and thus immobilized. Should the battery be accidentally overcharged producing hydrogen and oxygen, special one-way valves allow the gases to escape thus avoiding excessive pressure build-up. Otherwise, the battery is completely sealed and is, therefore, maintenance-free, leak proof and usable in any position.



## Battery Construction

|              |                |                |           |       |              |          |            |               |
|--------------|----------------|----------------|-----------|-------|--------------|----------|------------|---------------|
| Component    | Positive plate | Negative plate | Container | Cover | Safety valve | Terminal | Separator  | Electrolyte   |
| Raw material | Lead dioxide   | Lead           | ABS       | ABS   | Rubber       | Copper   | Fiberglass | Sulfuric acid |

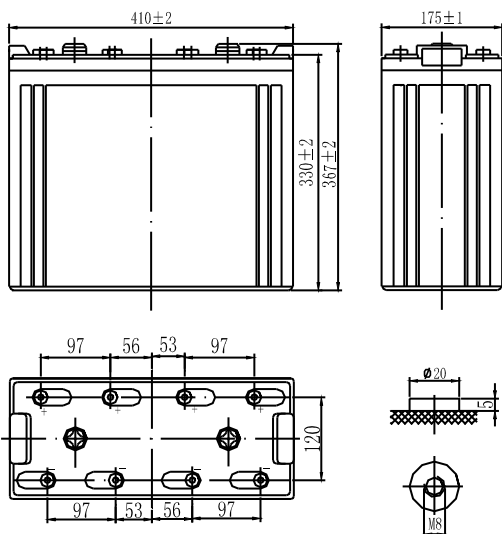
## General Features

- Absorbent Glass Mat (AGM) technology for efficient gas recombination of up to 99% and freedom from electrolyte maintenance or water adding.
- Not restricted for air transport-complies with IATA/ICAO Special Provision A67.
- UL-recognized component.
- Can be mounted in any orientation.
- Computer designed lead, calcium tin alloy grid for high power density.
- Long service life, float or cyclic applications.
- Maintenance-free operation.
- Low self discharge.

## Dimensions and Weight

|                          |             |
|--------------------------|-------------|
| Length(mm / inch)        | 410 / 16.14 |
| Width(mm / inch)         | 175 / 6.89  |
| Height(mm / inch)        | 330 / 13.0  |
| Total Height(mm / inch)  | 367 / 14.5  |
| Approx. Weight(Kg / lbs) | 57 / 125.7  |

\* Weight deviation: ± 3%



Total height with removeable cover: 367

## Performance Characteristics

|  |              |
|--|--------------|
| Nominal Voltage                                    | 2V           |
| Number of cell                                     | 1            |
| Design Life  | 20 years     |
| Nominal Capacity 77°F(25°C)                        |              |
| 10 hour rate (80A, 1.8V)                           | 800Ah        |
| 5 hour rate (144A, 1.75V)                          | 720Ah        |
| 1 hour rate (496A, 1.6V)                           | 496Ah        |
| Internal Resistance                                |              |
| Fully Charged battery 77°F(25°C)                   | ≤ 0.70mOhms  |
| Self-Discharge                                     |              |
| 3% of capacity declined per month at 20°C(average) |              |
| Operating Temperature Range                        |              |
| Discharge  | -20~60°C     |
| Charge   | -10~60°C     |
| Storage  | -20~60°C     |
| Max. Discharge Current 77°F(25°C)                  | 3000A(5s)    |
| Charge Methods: Constant Voltage Charge 77°F(25°C) |              |
| Cycle use  | 2.40-2.45VPC |
| Maximum charging current                           | 160A         |
| Temperature compensation                           | -5.0mV/°C    |
| Standby use  | 2.20-2.30VPC |
| Temperature compensation                           | -3.3mV/°C    |

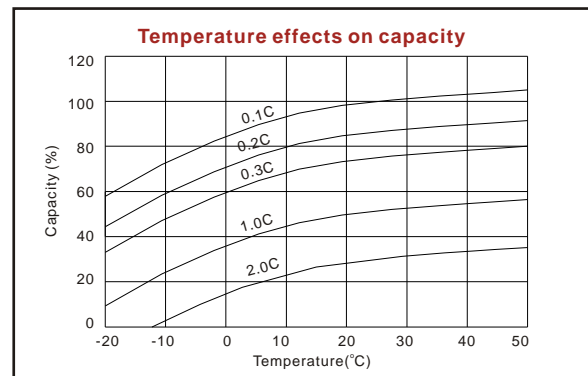
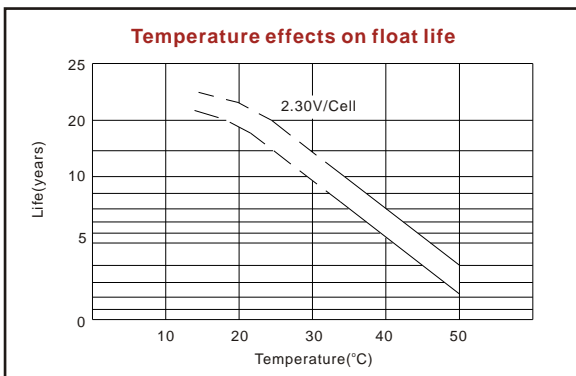
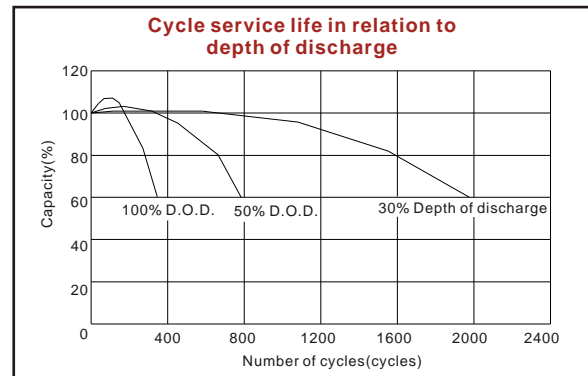
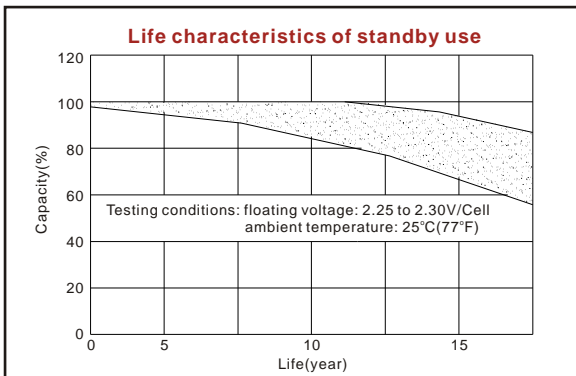
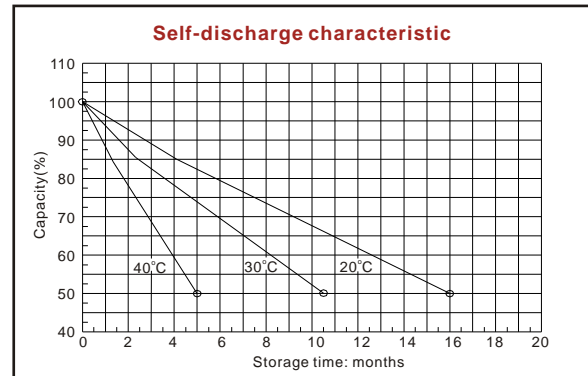
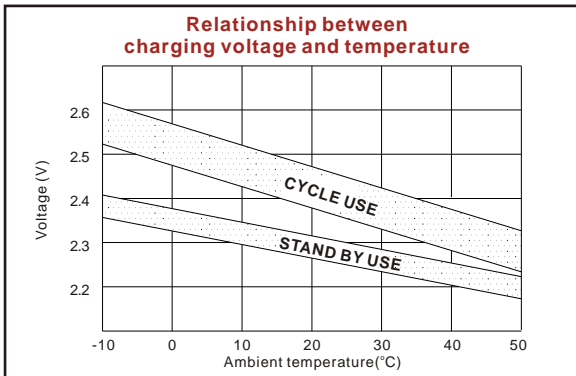
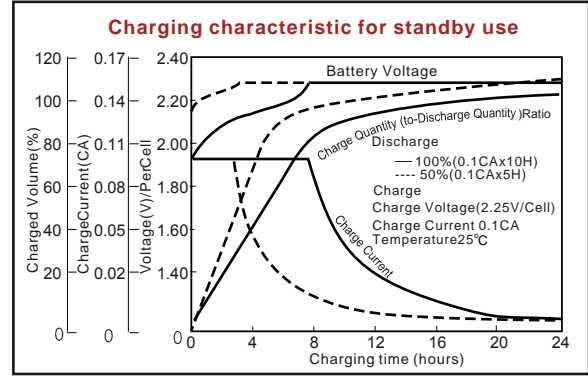
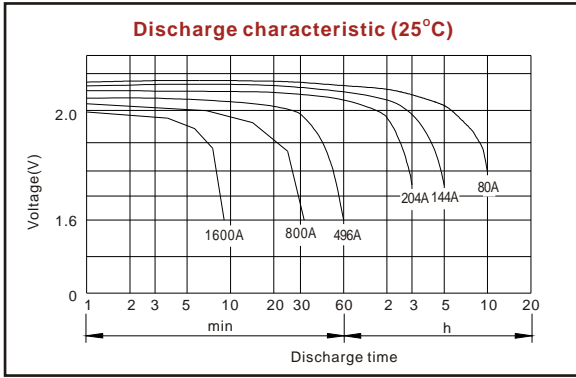
## Discharge Constant Current (Amperes at 77°F25°C)

| End Point Volts/Cell | 15min | 30min | 45min | 1h  | 3h  | 5h  | 10h  |
|----------------------|-------|-------|-------|-----|-----|-----|------|
| 1.60V                | 1281  | 830   | 650   | 496 | 227 | 156 | 86.0 |
| 1.65V                | 1219  | 793   | 624   | 478 | 220 | 152 | 84.9 |
| 1.70V                | 1156  | 755   | 597   | 458 | 213 | 148 | 83.0 |
| 1.75V                | 1091  | 716   | 568   | 439 | 204 | 144 | 81.8 |
| 1.80V                | 1025  | 676   | 538   | 418 | 195 | 139 | 80.0 |

## Discharge Constant Power (Watts at 77°F25°C)

| End Point Volts/Cell | 15min | 30min | 45min | 1h  | 2h  | 3h  | 5h  |
|----------------------|-------|-------|-------|-----|-----|-----|-----|
| 1.60V                | 1995  | 1497  | 1133  | 936 | 632 | 451 | 303 |
| 1.65V                | 1887  | 1422  | 1081  | 896 | 613 | 432 | 298 |
| 1.70V                | 1777  | 1346  | 1027  | 855 | 594 | 413 | 292 |
| 1.75V                | 1667  | 1267  | 971   | 812 | 575 | 394 | 286 |
| 1.80V                | 1557  | 1189  | 915   | 769 | 556 | 375 | 271 |

(Note)The above characteristics data are average values obtained within three charge/discharge cycles not the minimum values. All data shall be changed without notice, Vision reserves the right to explain and update the information contained hereinto.



ISO9001:2008

MH25860

G4M19906-9202-E-16

[www.vision-batt.com](http://www.vision-batt.com)

**Shenzhen Center Power Tech. Co., Ltd.**  
 Center Power Industrial Park, Tongfu Industrial District Dapeng Town, 518120 Shenzhen, China  
 Tel: (+86-755) 8431 8088 Fax: (+86-755) 8431 8038 E-mail: sales@vision-batt.com