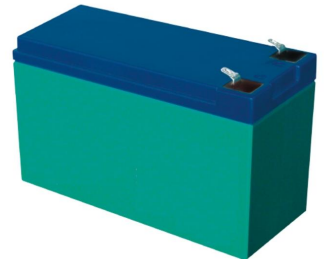


HPS12-28W

HPS12-28W is specially designed for high efficient discharge application. Its characteristics are high energy density, small footprint and high discharge efficiency. It can be used for more than 450 cycles at 50% discharge in cycle service, up to 5 years in float service.

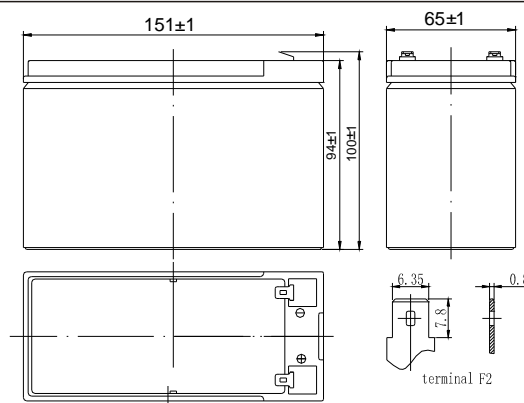
SPECIFICATIONS

| | |
|--|---|
| Nominal Voltage | 12 V |
| Number of cell | 6 |
| Nominal Capacity | 28Wh/cell @ 15 min rate F.V.(1.67V/cell) |
| Approx. Weight | 2.1Kg(4.63 lbs) (Weight deviation: $\pm 5\%$) |
| Internal Resistance | $\leq 25m\Omega$ (Fully Charged, 25°C) |
| Max. Discharge Current | 140 A (3 sec.) |
| Max. Charge Current | 2.8 A |
| Operating Temperature Range | Charge : -10°C~50°C Discharge : -20°C~60°C Storage : -10°C~55°C |
| Nominal Operating Temperature Range | 25 ± 5 °C |
| Container Material | ABS(UL94-HB)&Flammability resistance of(UL94-V0) can be available upon request. |
| Self Discharge | 3% of capacity declined per month at 20°C(average) |
| Charge Methods: Constant Voltage Charge (25°C) | |
| Cycle use | 2.40-2.45VPC |
| Temperature compensation | -30mV/°C |
| Standby use | 2.23-2.30VPC |
| Temperature compensation | -20mV/°C |



Dimensions

| | SI Units | English Units |
|--------------|----------|---------------|
| Length | 151mm | 5.94inch |
| Width | 65mm | 2.56inch |
| Height | 94mm | 3.70inch |
| Total Height | 100mm | 3.94inch |



Constant Current Discharge(Amperes at 25°C)

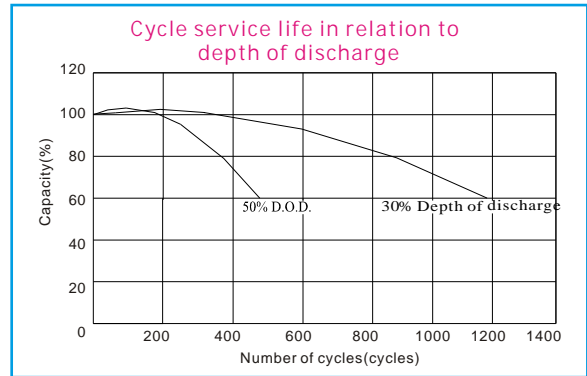
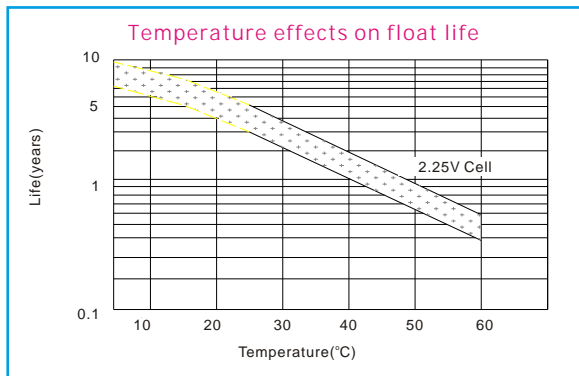
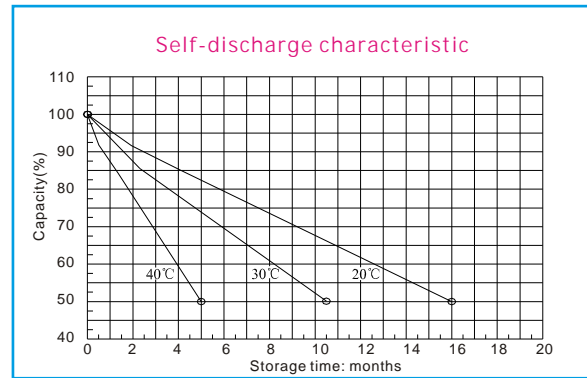
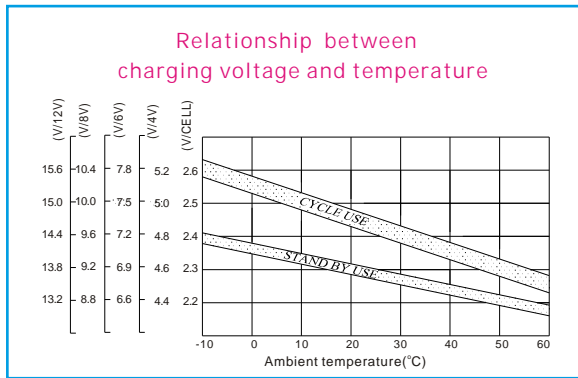
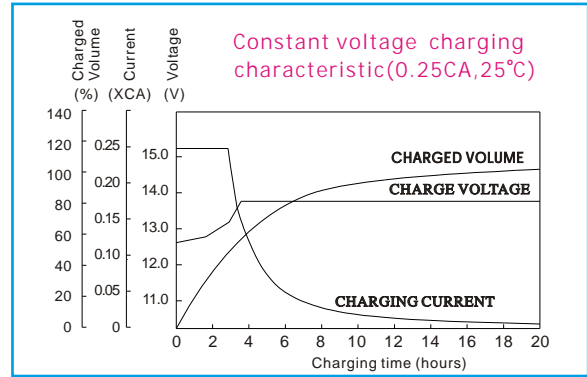
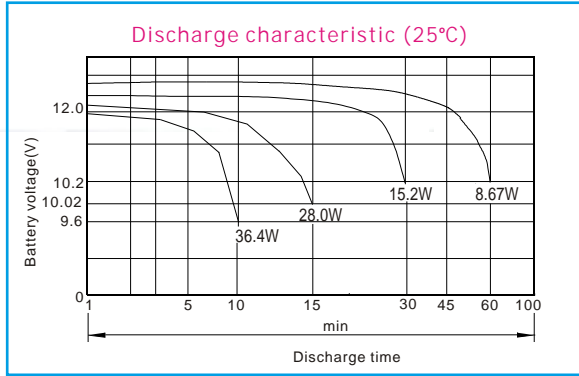
| End Point Volts/cell | 2 min | 5 min | 8 min | 10 min | 15 min | 20 min | 30 min | 50 min | 60 min |
|----------------------|-------|-------|-------|--------|--------|--------|--------|--------|--------|
| 1.60 | 50.2 | 27.5 | 23.0 | 18.5 | 15.2 | 11.5 | 7.90 | 5.50 | 4.51 |
| 1.67 | 48.5 | 27.0 | 22.3 | 18.2 | 14.5 | 11.0 | 7.85 | 5.45 | 4.48 |
| 1.70 | 46.4 | 25.1 | 21.1 | 17.4 | 14.0 | 10.4 | 7.71 | 5.42 | 4.43 |
| 1.75 | 45.9 | 23.7 | 19.5 | 16.8 | 13.5 | 10.0 | 7.45 | 5.39 | 4.40 |
| 1.80 | 43.5 | 22.5 | 16.6 | 16.0 | 13.1 | 9.65 | 7.32 | 5.37 | 4.36 |

Constant Power Discharge(Watts per Cell at 25°C)

| End Point Volts/cell | 2 min | 5 min | 8 min | 10 min | 15 min | 20 min | 30 min | 50 min | 60 min |
|----------------------|-------|-------|-------|--------|--------|--------|--------|--------|--------|
| 1.60 | 93.5 | 54.2 | 43.0 | 36.4 | 29.2 | 21.9 | 15.4 | 10.2 | 8.73 |
| 1.67 | 92.0 | 53.7 | 40.3 | 35.2 | 28.0 | 21.0 | 15.3 | 10.0 | 8.71 |
| 1.70 | 88.4 | 49.5 | 38.5 | 32.1 | 26.6 | 20.0 | 15.2 | 9.62 | 8.67 |
| 1.75 | 86.7 | 46.7 | 35.4 | 31.0 | 26.3 | 19.3 | 14.5 | 9.35 | 8.65 |
| 1.80 | 83.4 | 43.2 | 31.2 | 30.2 | 25.5 | 18.5 | 14.0 | 9.22 | 8.57 |

(Note) The above characteristics data are average values obtained within three charge/discharge cycles not the minimum values. All data shall be changed without prior notice, VISION reserves the right to explain and update the information contained hereinto.

HPS12-28W



Shenzhen Center Power Tech. Co., Ltd.

Center Power Industrial Park, Tongfu Industrial District Dapeng Town, 518120 Shenzhen, China
Tel: (+86-755) 8431 8088 Fax: (+86-755) 8431 8038 E-mail: sales@vision-batt.com



ISO9001:2000



MH25860



G4M19906-9202-E-16



www.vision-batt.com