



SCP122500 DC 8D 12V 250Ah(20hr)

Rechargeable AGM Lead Acid batteries. Battery is completely sealed and is maintenance-free, leak proof, and can be used in any position. Is approved for transportation by Air, DOT, IATA, and FAA.

General Features

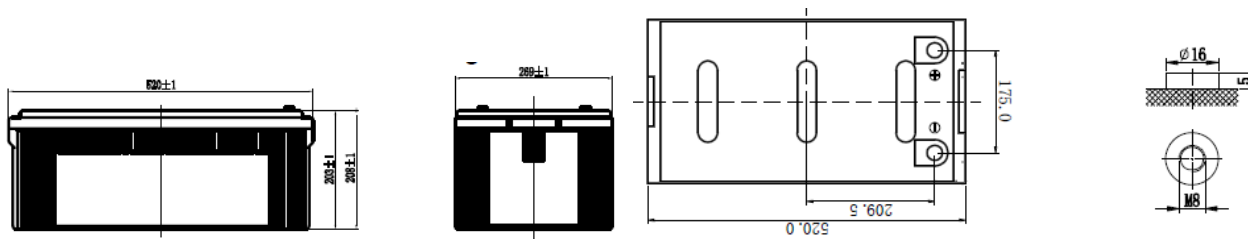
- Absorbent Glass Mat (AGM) Deep Cycle technology high cycle applications.
- Not restricted for air transportation, complies with IATA/ICAO special provision 67
- UL-recognized component
- Computer designed lead, calcium tin alloy grid for high power density
- Long service life, float or cyclic applications
- Maintenance-Free
- Low self-discharge

Dimensions and Weight

Length (mm / inch)	520/20.5
Width (mm / inch)	269/10.6
Height (mm / inch)	203/8.0
Total Height (mm / inch)	208/8.2
Aprox. Weight (kg / lbs)	72.6/160.1
Terminal Type/size	M8

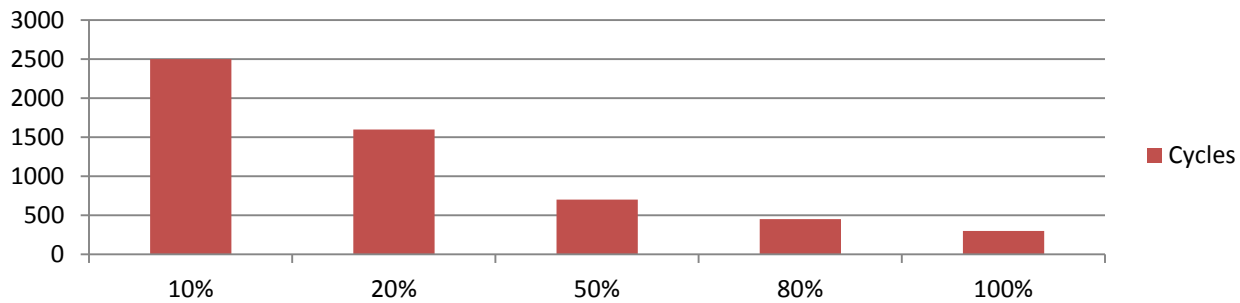
Performance Characteristics

Nominal voltage	12
Number of cells	6
Nominal Capacity 77° F (25°C)	
100 hour rate	1.80V/cell 269Ahr
24 hour rate	1.80V/cell 250Ahr
10 hour rate	1.75V/cell 245Ahr
5 hour rate	1.75V/Cell 201.5Ahr
1 hour rate	1.60V/cell 162.5Ahr
Self-Discharge	
3% of capacity per month at 20°C	
Operating Temperature Range	
Discharge	-20 to +60°C
Charge	-10 to +60°C
Storage	-20 to +60°C
Max Discharge Current	1100A
Short Circuit Current	4300A
Charge Methods: Constant Voltage Charge 77°F (25°C)	
Cycle use	2.40-2.45VPC
Maximim charging current	0.33C 20hr
Temperature compensation	-30mV/°C
Standby use	2.26-2.30VPC
Temperature compensation	-20mV/°C

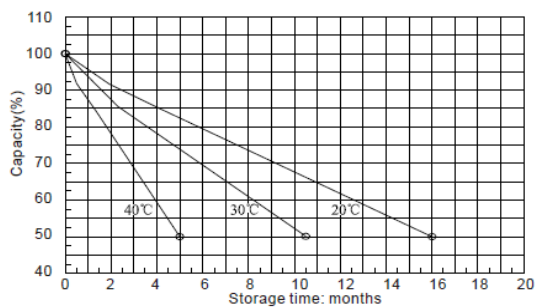


SCP122500 DC 8D 12V 250Ah(20hr)

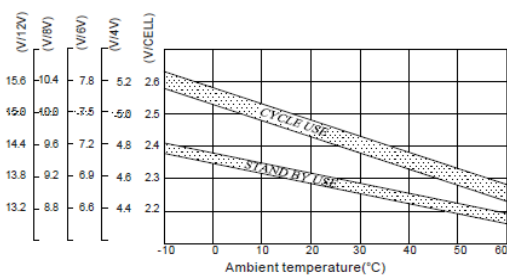
Cycle life SCP DC Models % DOD



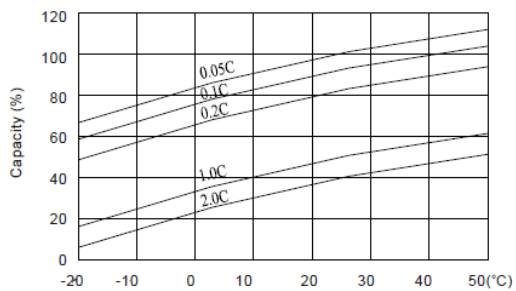
Self-discharge characteristic



Relationship between charging voltage and temperature



Temperature effects on capacity



Temperature effects on float life

