



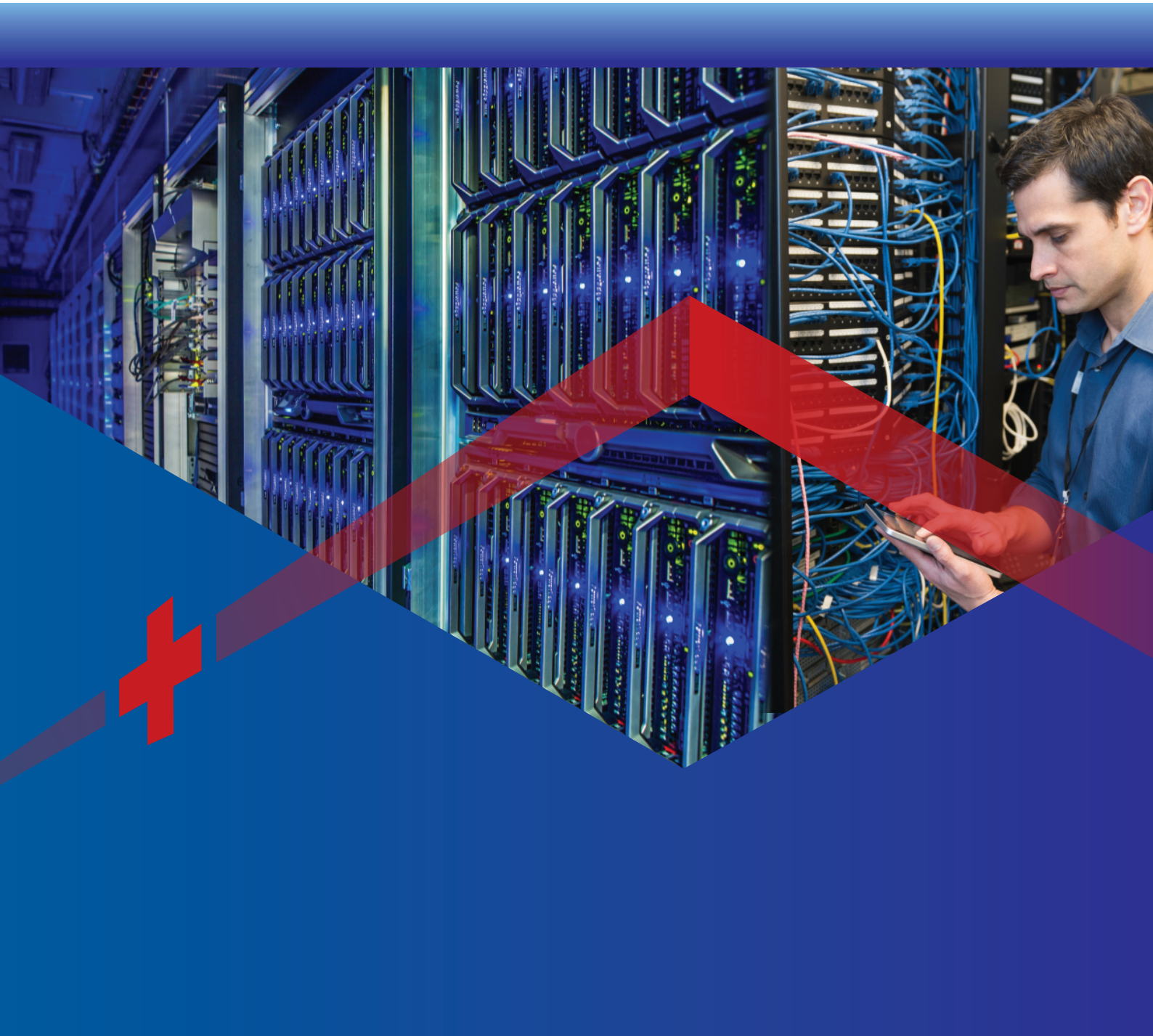
VISION GROUP

[www.vision-batt.com](http://www.vision-batt.com)

VISION ⊕  
Rechargeable  
Products

## UNA SERIES HIGH RATE UPS BATTERIES

- UNA (UPS North America) Series
- Specified for U.S. Market





# VISION GROUP

Vision Group was founded in 1994, with its headquarter in Shenzhen. We are one of the largest and the first one to develop and commercialize the VRLA Battery with brand VISION around the world. With 20 years' development, Vision has three industrial locations in Shenzhen, Hubei Province and Vietnam, which cover the area of 260,000m<sup>2</sup>.

Our products are classified into different categories: Valve-Regulated Lead Acid Battery, Lithium-ion Battery, Hybrid Battery, etc. The VRLA battery includes AGM series, Deep Cycle series, Pure Lead series and Gel series. The Lithium-ion Battery covers Lithium cobalt oxide series, Lithium manganese oxide series and Lithium iron phosphate series.

Vision Group is committed to keep high quality of products and provides perfect service. Vision Group has a powerful global sales network. Currently, its sales and service engineers are active in over 100 countries.

Vision Battery USA is a branch company of Vision Group, aiming to provide excellent products and service for U.S. market.

## UNA Advantages:

Grid: Better corrosion resistance performance, longer floating life and low self-discharge by adopting a unique alloy formula and strictly controlling production process.

Lead powder: Stable oxidizability and granularity of lead powder which is consistent with battery' s large current by automatic program control.

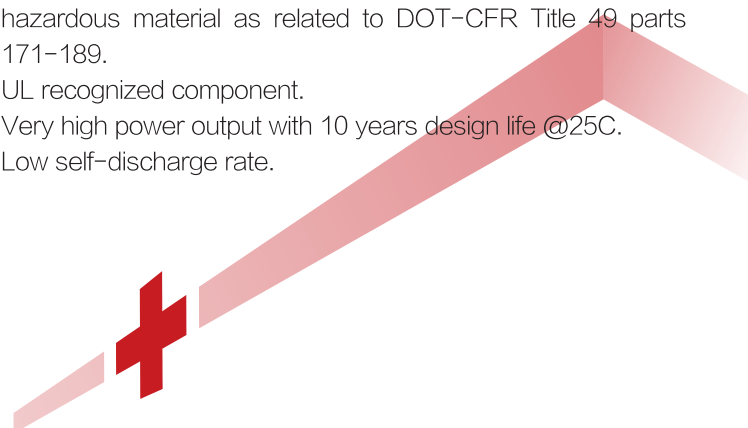
Lead paste: High power, deep cycle discharge, full-automatic paste mixing system and real-time temperature control by taking a unique lead paste formula.

## Benefits for Customers:

- More stable high current discharge performance
- Longer service life (four-year warranty)
- Free of maintenance
- Flame retardant designed & safe
- Low self-discharge & environmentally friendly

## General Features:

- Computer designed low calcium tin alloy plates extend battery life with minimum grid growth and reduced gassing.
- Absorbent Gas Mat (AGM) technology for efficient gas recombination of up to 99% and maintenance free operation.
- Flame retardant (UL 94-V0) case and covers.
- Can be operated in any orientation.
- Not restricted for air transportation, complies with IATA/ICAO Special Provision A67
- Not restricted for ground transportation, classified as non-hazardous material as related to DOT-CFR Title 49 parts 171-189.
- UL recognized component.
- Very high power output with 10 years design life @25C.
- Low self-discharge rate.



## SPECIFICATIONS

Operating Temperature Range with temperature compensation	Discharge: -20°C to +60°C Charge: -10°C to +60°C
Nominal Operating Temperature Range	25 ± 5°C
Recommended Maximum Charging Current Limit	0.3C amperes @ 10hr rate
Float Charging Voltage	13.55 ± 0.3 VDC average per 12V unit
Maximum AC Ripple (Charger)	0.5% RMS or 1.5% P-P of float charge voltage recommended for best results
Self Discharge	Up to 6 months at 25°C and then a freshening charge is required. For higher temps, the time interval will increase. Freshening charge is required. For higher temperatures the time interval will be shorter. For lower temperatures time interval will decrease equalization charge.
Equalize charge and cycle service voltage	14.40 to 14.70 VDC average per 12V unit @ 77° F (25°C)
Terminal Hardware Initial Torque: Inserted Terminal	6.2 N-m (UNA12-115) 8.5 N-m (UNA12-150, UNA12-200, UNA12-320, UNA12-370, UNA12-420, UNA12-500, UNA12-540)

## DIMENSIONS

					UNA12-115	UNA12-150	UNA12-200	UNA12-320
	A	B	C	D	UNA12-370	UNA12-420	UNA12-500	UNA12-540
UNA12-115	165 (6.5)	125 (4.92)	175 (6.89)	175 (6.89)				
UNA12-150	195 (7.68)	130 (5.12)	155 (6.10)	168 (6.61)				
UNA12-200	229 (9.02)	138 (5.43)	208 (8.19)	213 (8.39)				
UNA12-320	258 (10.16)	166 (6.54)	206 (8.11)	215 (8.46)				
UNA12-370	306 (12.05)	170 (6.69)	220 (8.66)	225 (8.86)				
UNA12-420	339 (13.30)	173 (6.81)	215 (8.46)	220 (8.66)				
UNA12-500	341 (13.43)	173 (6.81)	283 (11.14)	287 (11.30)				
UNA12-540	341 (13.43)	173 (6.81)	283 (11.14)	287 (11.30)				

VISION   
 Rechargeable  
 Products



**UNA SERIES HIGH RATE UPS BATTERIES**

Type	Nominal Voltage (V)	Nominal Capacity / WPC (15min 1.67V)	Nominal Capacity (10hr/Ah)	Length		Width		Height		Total Height		Terminal	Weight(Aprox)	
				mm	in	mm	in	mm	in	mm	in		Kg	Pound
UNA12-115	12	115	28(20hr)	165	6.50	125	4.92	175	6.89	175	6.89	M5	9.6	21.21
UNA12-150	12	150	33	195	7.68	130	5.12	155	6.10	168	6.61	M6	11.5	25.41
UNA12-200	12	200	55	229	9.02	138	5.43	208	8.19	213	8.39	M6	17.0	37.51
UNA12-320	12	320	75	258	10.16	166	6.54	206	8.11	215	8.46	M6	24.5	54.00
UNA12-370	12	390	90	306	12.05	170	6.69	220	8.66	225	8.86	M6	28.5	62.80
UNA12-420	12	420	100	339	13.30	173	6.81	215	8.46	220	8.66	M6	31.5	69.40
UNA12-500	12	500	134	341	13.43	173	6.81	283	11.14	287	11.30	M6	39.5	87.10
UNA12-540	12	540	140	341	13.43	173	6.81	283	11.14	287	11.30	M6	41.0	90.40



## UNA12-115 12V 115W

### Discharge Data

Constant Current Discharge Data ( Amperes at 25°C)								
End voltage volts cell	5min	10min	15min	20min	30min	40min	50min	60min
1.60	125	87.5	67.3	54.5	41.7	32.6	27.2	23.5
1.67	117	82.7	63.8	51.7	39.6	31.0	25.9	22.4
1.70	110	78.0	60.3	48.9	37.4	29.4	24.6	21.4
1.75	103	73.2	56.8	46.1	35.3	27.8	23.3	20.3
1.80	98.2	70.5	54.8	44.6	34.4	27.1	22.7	19.8

Constant Power Discharge Data ( Watts per cell at 25°C)								
End voltage volts cell	5min	10min	15min	20min	30min	40min	50min	60min
1.60	229	155	118	95.3	72.6	58.6	49.7	43.5
1.67	219	149	115	92.1	70.3	56.8	48.3	42.3
1.70	210	144	110	89.0	67.9	55.0	46.8	41.1
1.75	200	138	106	85.8	65.6	53.2	45.4	39.9
1.80	190	132	102	82.6	63.2	51.4	43.9	38.7

## UNA12-150 12V 150W

### Discharge Data

Constant Current Discharge Data ( Amperes at 25°C)								
End voltage volts cell	5min	10min	15min	20min	30min	40min	50min	60min
1.60	165	115	86.7	69.5	50.4	40.0	33.5	28.9
1.67	150	106	82.1	66.1	48.4	38.5	32.5	28.5
1.70	142	102	80.0	64.5	47.5	38.0	32.1	28.4
1.75	130	96.5	76.0	62.0	45.7	36.5	30.8	27.8
1.80	118	90.0	71.0	58.2	43.8	35.0	29.7	26.8

Constant Power Discharge Data ( Watts at 25°C)								
End voltage volts cell	5min	10min	15min	20min	30min	40min	50min	60min
1.60	298	210	152	131	96.0	77.0	64.5	55.7
1.67	270	197	150	125	93.0	75.0	64.2	55.6
1.70	258	190	146	122	91.1	73.5	63.5	55.3
1.75	237	179	137	117	88.3	71.2	62.3	54.0
1.80	215	167	131	112	85.2	68.3	60.2	52.1

## UNA12-200 12V 200W

### Discharge Data

Constant Current Discharge Data ( Amperes at 25°C)								
End voltage volts cell	5min	10min	15min	20min	30min	40min	50min	60min
1.60	236	159	119	96.0	69.8	56.0	47.1	40.6
1.67	212	152	115	94.2	69.1	55.2	46.6	40.0
1.70	203	147	113	92.9	68.3	55.0	46.4	39.9
1.75	186	137	108	89.3	66.2	53.6	45.5	39.1
1.80	160	122	99.0	82.7	62.7	51.7	43.7	37.8

Constant Power Discharge Data ( Watts at 25°C)								
End voltage volts cell	5min	10min	15min	20min	30min	40min	50min	60min
1.60	374	267	204	168	125	101	85.0	72.8
1.67	353	255	200	166	124	100	84.7	72.6
1.70	337	248	196	163	122	99.1	84.6	72.5
1.75	309	233	188	157	118	97.6	82.9	70.9
1.80	281	215	177	147	113	94.2	79.8	69.1

## UNA12-320 12V 320W

### Discharge Data

Constant Current Discharge Data ( Amperes at 25°C)								
End voltage volts cell	5min	10min	15min	20min	30min	40min	50min	60min
1.60	349	237	183	150	113	90.8	77.1	65.8
1.67	310	219	170	141	108	87.8	73.8	63.4
1.70	292	210	164	136	105	85.9	71.9	61.1
1.75	259	192	154	129	100	83.4	69.8	59.2
1.80	227	177	144	122	93.8	77.5	64.6	55.1

Constant Power Discharge Data ( Watts at 25°C)								
End voltage volts cell	5min	10min	15min	20min	30min	40min	50min	60min
1.60	614	422	327	270	203	162	139	118
1.67	556	397	320	259	197	160	135	116
1.70	528	385	301	253	194	158	133	113
1.75	479	358	288	243	187	152	128	110
1.80	426	330	273	233	179	147	124	106

## UNA12-370 12V 390W

### Discharge Data

Constant Current Discharge Data ( Amperes at 25°C)							
End voltage volts cell	5min	10min	15min	20min	30min	40min	60min
1.60	347	275	223	176	136	90.0	67.5
1.67	324	258	213	167	128	88.0	64.7
1.70	312	247	205	159	123	81.0	62.6
1.75	300	236	197	153	117	76.5	59.5
1.80	286	227	187	146	111	74.2	57.6

Constant Power Discharge Data ( Watts at 25°C)							
End voltage volts cell	5min	10min	15min	20min	30min	40min	60min
1.60	654	497	395	303	235	164	124
1.67	615	477	390	289	225	160	121
1.70	585	463	365	280	216	155	115
1.75	561	445	348	267	209	148	111
1.80	538	428	333	257	200	140	103

## UNA12-420 12V 420W

### Discharge Data

Constant Current Discharge Data (Ampere at 25°C)							
End voltage volts cell	5min	10min	15min	20min	30min	45min	60min
1.60	460	317	240	190	160	97.0	72.9
1.67	434	295	225	178	152	95.7	70.0
1.70	411	280	210	167	140	92.0	68.0
1.75	390	267	200	162	135	89.0	66.0
1.80	365	250	191	156	127	85.1	62.0

Constant Power Discharge Data (Watts at 25 °C)							
End voltage volts cell	5min	10min	15min	20min	30min	45min	60min
1.60	800	568	437	348	292	182	137
1.67	751	538	420	335	285	178	134
1.70	711	508	395	323	272	172	130
1.75	667	477	372	303	260	168	126
1.80	627	454	349	290	251	161	119

## UNA12-500 12V 500W

### Discharge Data

Constant Current Discharge Data (Ampere at 25°C)							
End voltage volts cell	10min	15min	20min	30min	40min	50min	60min
1.60	329	141	270	199	129	158	100
1.67	12	256	111	134	150	189	95.7
1.70	294	240	106	127	142	178	91.3
1.75	276	227	100	120	134	168	86.5
1.80	265	218	98.0	117	130	163	84.5

Constant Power Discharge Data (Watts at 25 °C)							
End voltage volts cell	10min	15min	20min	30min	40min	50min	60min
1.60	600	503	404	319	255	212	180
1.67	578	500	390	308	247	207	177
1.70	554	455	377	298	240	201	173
1.75	526	438	363	288	232	196	169
1.80	504	421	350	277	224	189	165

## UNA12-540 12V 540W

### Discharge Data

Constant Current Discharge Data (Ampere at 25 °C)							
End voltage volts cell	10min	15min	20min	30min	40min	50min	60min
1.60	355	292	245	193	151	124	106
1.67	337	276	232	183	143	118	101
1.70	318	259	220	173	136	112	96.8
1.75	298	245	207	164	128	106	91.7
1.80	286	235	201	158	125	104	89.6

Constant Power Discharge Data (Watts at 25 °C)							
End voltage volts cell	10min	15min	20min	30min	40min	50min	60min
1.60	648	543	436	341	273	225	191
1.67	624	540	421	330	264	219	188
1.70	598	491	407	319	257	213	183
1.75	568	473	392	308	248	208	179
1.80	544	455	378	296	240	200	175



International Brand Global Sales



## VISION GROUP

Vision Battery USA, Inc.

Tel: +1-417-6254842

E-mail: [sales-usa@vision-batt.com](mailto:sales-usa@vision-batt.com)

12150 Shiloh Rd. Suite 120 Dallas TX 75228

[www.vision-batt.com](http://www.vision-batt.com)